



THE VIRGINIA DEPARTMENT OF GAME AND INLAND FISHERIES CHRONIC WASTING DISEASE SURVEILLANCE FOR 2011-2012

The Virginia Department of Game and Inland Fisheries (VDGIF) is once again conducting CWD surveillance during the 2011-2012 hunting season. If a hunter harvests a deer within the CWD Containment Area (Anywhere west of Interstate 81 in Frederick County and the City of Winchester and west of Interstate 81 and north of Rte. 675 in Shenandoah County) on November 19, November 26, or December 3, the hunter must bring the deer to one of the seven (7) locations listed below for CWD sampling:

1. State Line Store, 1778 Bloomery Pike, Whitacre, Va.
(Rte. 522 north to Rte. 127 west @ Va.-WVa. State line)
2. Crossroads Grocery, 119 Cedar Grove Road, Winchester, Va.
(Rte. 522 north @ Cedar Grove Road; store is on the right)
3. T & R Processing, 691 Carpers Valley Road, Winchester, Va.
(Rte. 50 east, left on Carpers Valley Road, on left @ Frederick-Clarke County line)
4. Gore Grocery, 305 Gore Road, Gore, Va.
(Rte. 50 west, left on Gore Road, store on left)
5. Cather's Market, 2765 Northwestern Pike, Winchester, Va.
(Rte. 50 west on left between Spinning Wheel Lane & Poorhouse Road)
6. Graden's Supermarket, 6836 John Marshall Highway, Lebanon Church, Va.
(From Exit 296 on I-81, take Rte. 55 west thru Lebanon Church, store on right)
7. Cline's Store, 19004 Senedo Road, Edinburg, Va. (Formerly "Larkin's Store")
(From Exit 283 on I-81, follow Rte. 42 south to just south of Columbia Furnace, store on left)

We strongly encourage hunters who are successful on days other than those listed above to volunteer the head and neck from their deer for sampling by bringing it to one of our self-service refrigerated drop stations listed on the next page.

INSTRUCTIONS FOR HUNTERS VOLUNTARILY SUBMITTING DEER HEADS FOR CWD TESTING

1. Submit heads from adult deer ONLY. (No fawns)
2. Submit at least four (4) inches of the neck with the head. (head and neck are required for sampling)
3. If you plan to mount a buck's head, please do not submit it, as we must keep the head.
4. If you do not intend to mount your head, but would like to remove the antlers and skull plate, feel free to do so before submitting the head. We can still obtain a sample.
5. Deliver the head as fresh as possible to the self-service station. As long as the head is kept cool (NOT frozen), you can wait a day or two.
5. Please fill out the data card per instructions posted at the self-service location.

LISTING OF SELF-SERVICE REFRIGERATOR DROP POINTS

DIRECTIONS FOR USE AND SUPPLIES ARE POSTED AT EACH DROP POINT

(Map of locations is on the next page)

Winchester-Frederick County Conservation Club, 527 Siler Road, Winchester, Va.

Directions: From Winchester, follow Rte. 522 north to Gainesboro, then turn right onto Siler Road (Rte. 600). Take the first left onto Club property. The self-service facility is under the overhang of the first building on the right.

North Mountain Volunteer Fire and Rescue Company 19, 186 Rosenberger Lane, Winchester, Va.

Directions: Take Back Mountain Road (Rte. 600) north or south to Tom's Market (near High View Manor), turn beside the store on Rosenberger Lane, fire department is on your right. The self-service facility is located next to the garage behind the fire station, accessible by a gravel road just past the fire station entrances.

Walker's Cash Store, 3321 Back Road, Woodstock, Va.

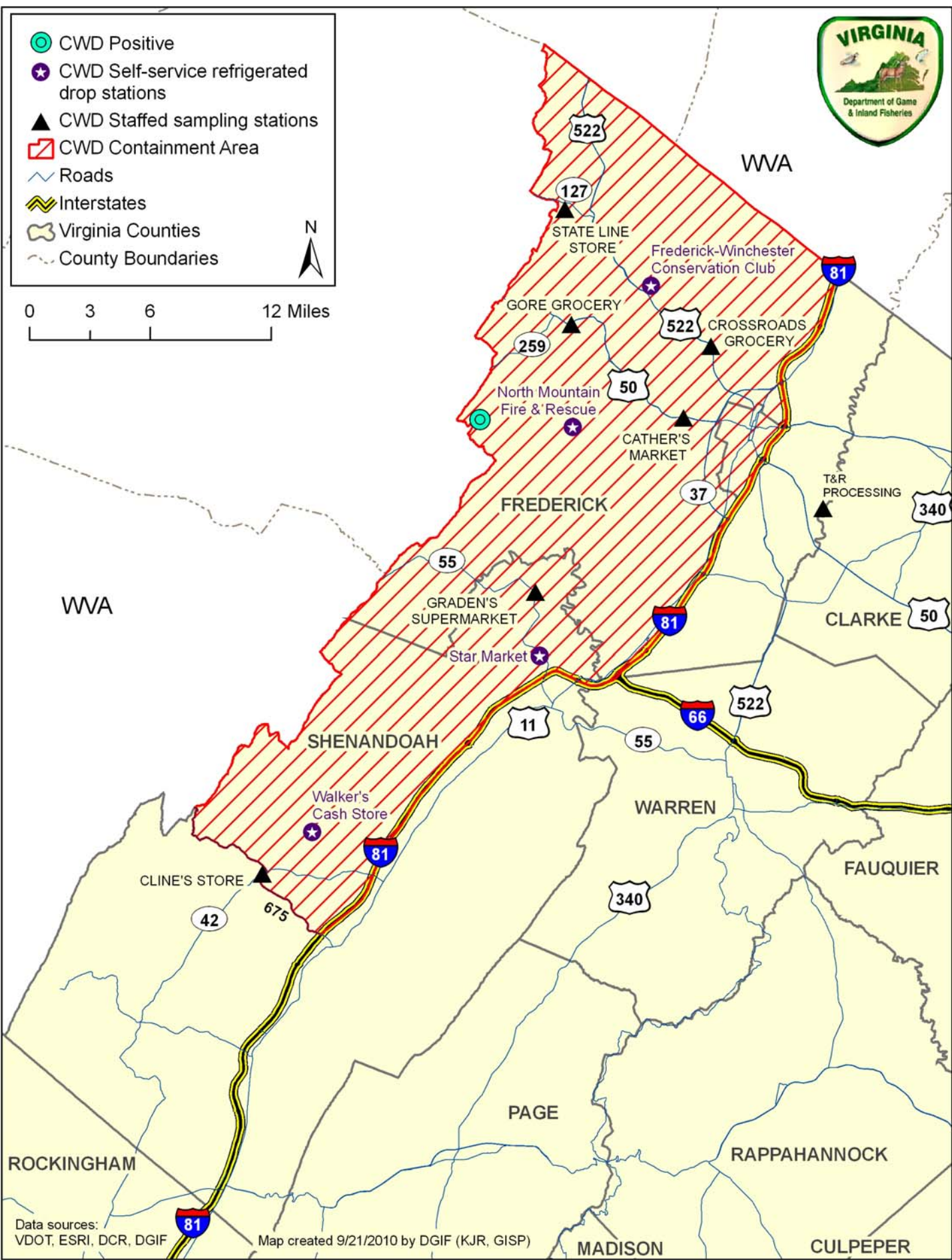
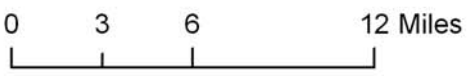
Directions: Take Back Road (Rte. 623) north or south to the intersection with St. Luke Road (Rte. 605) in St. Luke. Store is at the intersection. The self-service facility is located behind the store next to the check station scales.

New Star Market, 2936 John Marshal Hwy, Strasburg, Va.

Directions: From Exit 296 on I-81, take Rte. 55 west approximately one mile, store on right



- CWD Positive
- ★ CWD Self-service refrigerated drop stations
- ▲ CWD Staffed sampling stations
- ▭ CWD Containment Area
- Roads
- Interstates
- Virginia Counties
- County Boundaries



Data sources:
VDOT, ESRI, DCR, DGIF

Map created 9/21/2010 by DGIF (KJR, GISP)